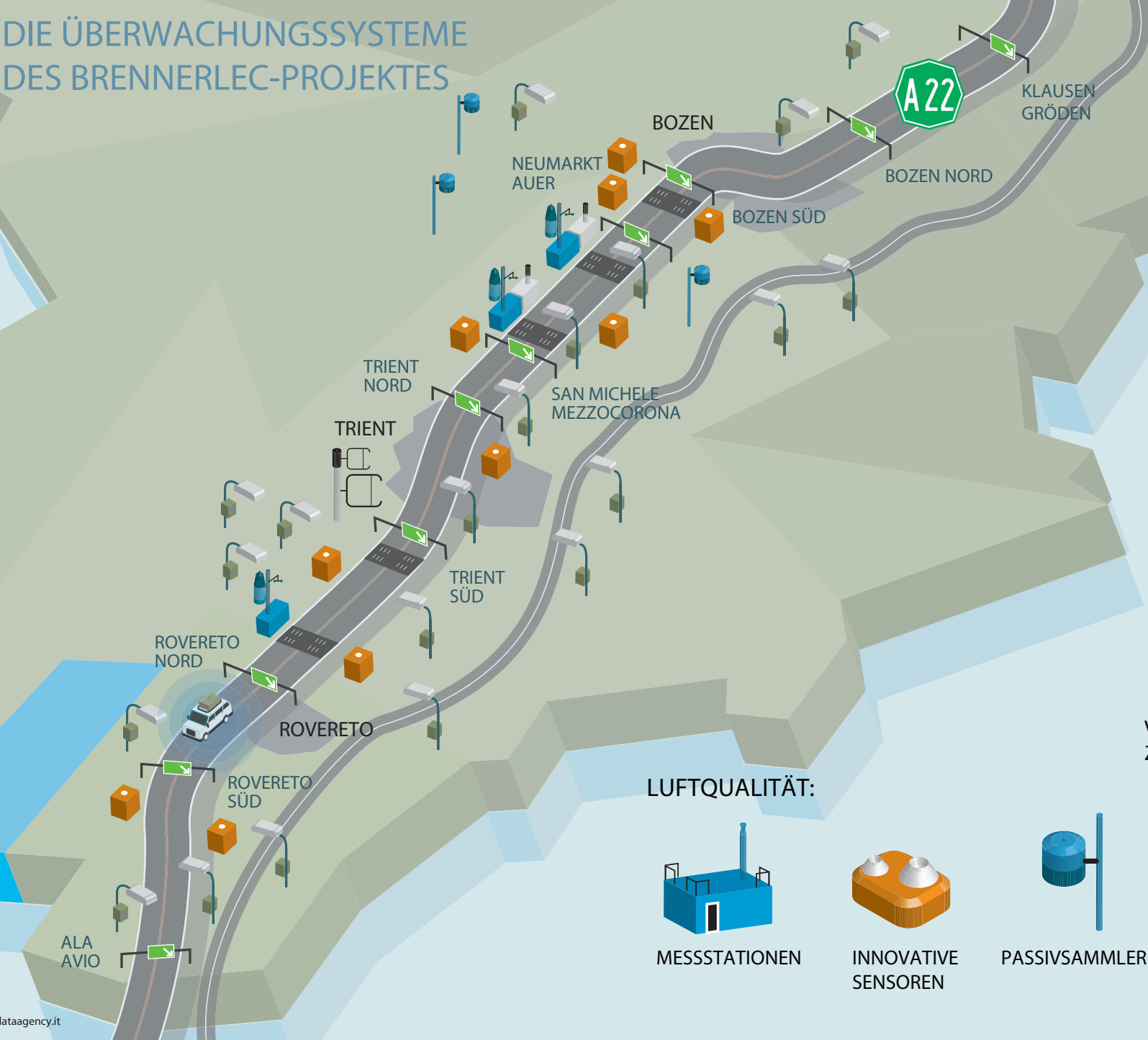
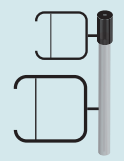


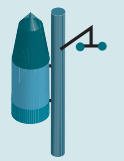
DIE ÜBERWACHUNGSSYSTEME DES BRENNERLEC-PROJEKTES



WETTER:

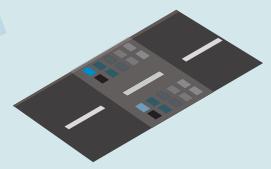


ULTRASCHALL-ANEMOMETER

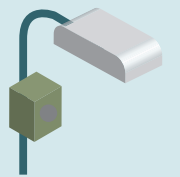


WETTERSTATION

VERKEHR:

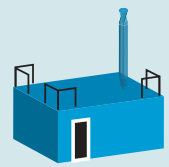


VERKEHRS-ZÄHLSTELLEN

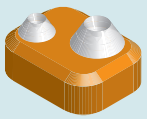


FAHRZEITEN-SENSOREN

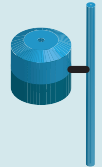
LUFTQUALITÄT:



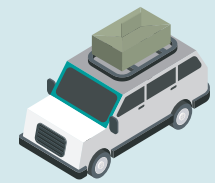
MESSTATIONEN



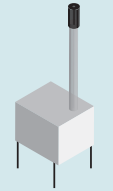
INNOVATIVE SENSOREN



PASSIVSAMMLER



MOBILE MESSSYSTEME



SCHALLPEGEL-MESSGERÄT

dataagency.it